

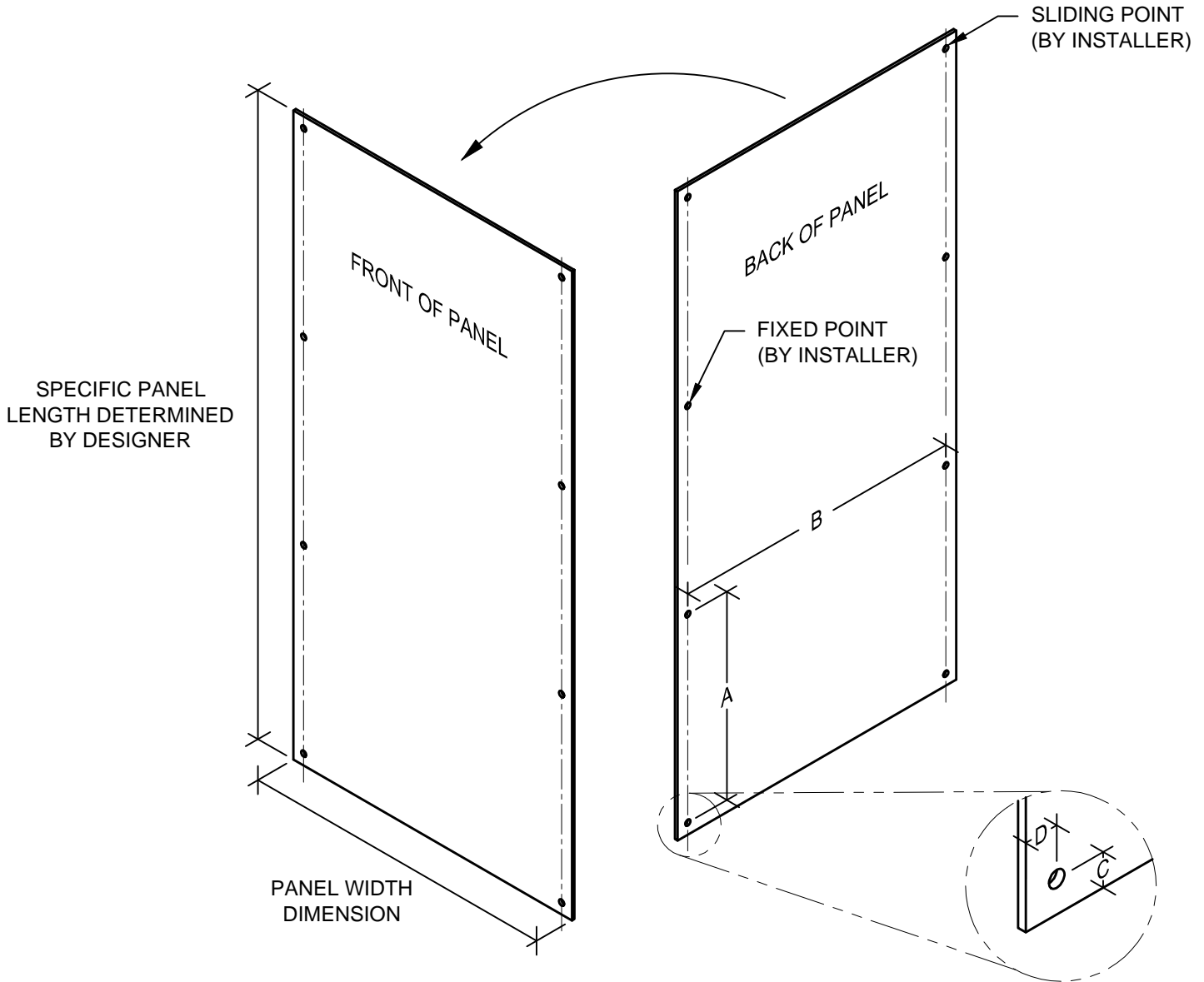
REFER TO DETAILS 02-11 FOR MORE INFORMATION ON INSTALLATION AND FITMENT OF MEG PANELS.

FABRICATOR CUTS PANEL TO SPECIFIC SIZES FROM FACTORY MANUFACTURED FLAT SHEET.

TYPICAL SHEET SIZE: 1300mm x 3050mm (51" x 120")

WEIGHT: 8mm PANEL = 2.21 lbs/ft²

10mm PANEL = 2.77 lbs/ft²



PLEASE NOTE: PANELS ARE DIRECTIONAL

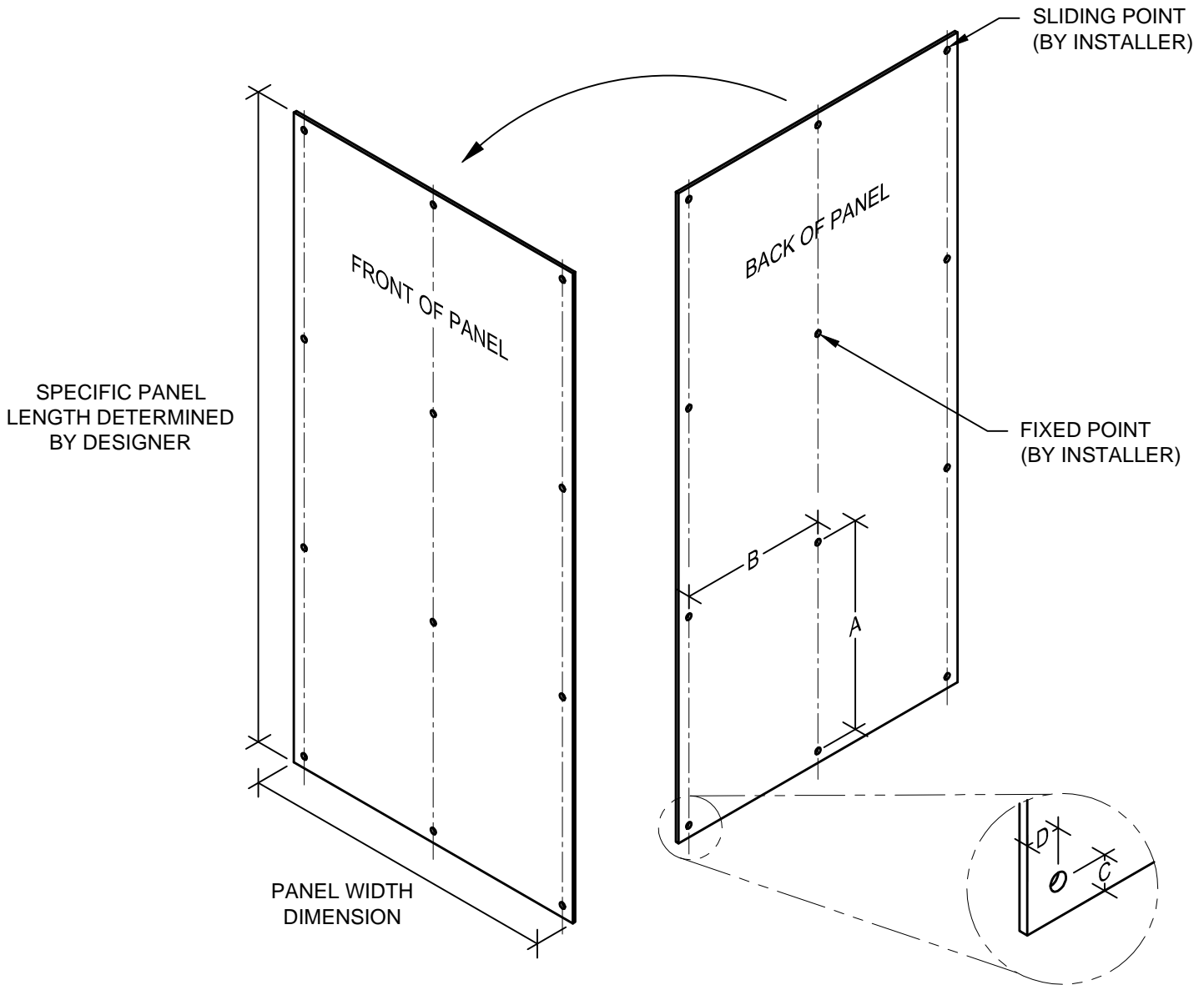
PANEL THICKNESS	A	B	C	D
8mm (5/16")	550mm (21 5/8")	500mm (19 1/16")	40mm (1 9/16")	40mm (1 9/16")
10mm (3/8")	800mm (31 1/2")	600mm (23 5/8")	50mm (2")	50mm (2")

PANEL HOLE LAYOUT BASED ON WIND LOAD REQUIREMENTS
 (MAXIMUM LENGTH)

FABRICATOR CUTS PANEL TO SPECIFIC SIZES FROM FACTORY MANUFACTURED FLAT SHEET.

TYPICAL SHEET SIZE: 1300mm x 3050mm (51" x 120")

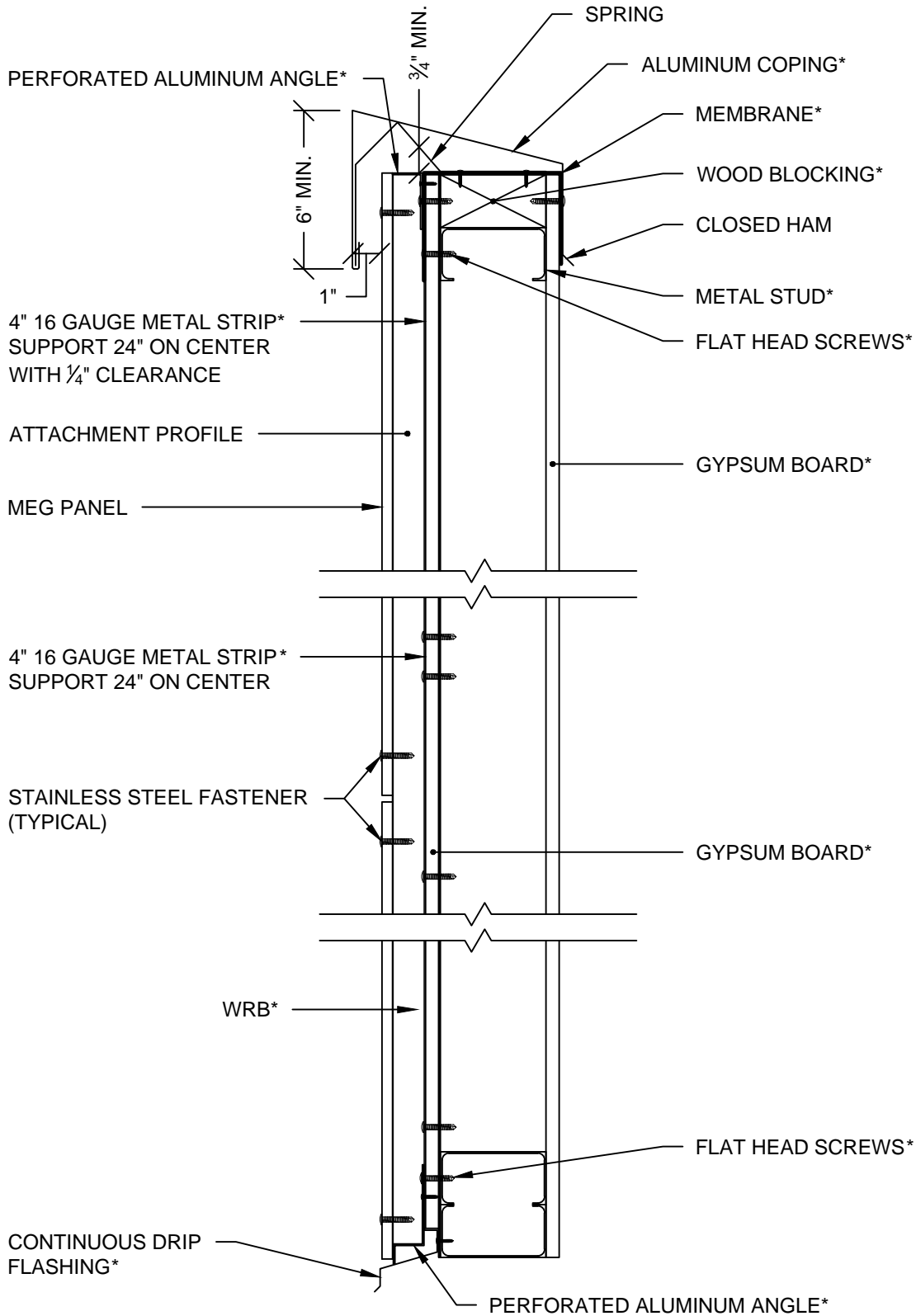
WEIGHT: 8mm PANEL = 2.21 lbs/ft²
 10mm PANEL = 2.77 lbs/ft²



PLEASE NOTE: PANELS ARE DIRECTIONAL

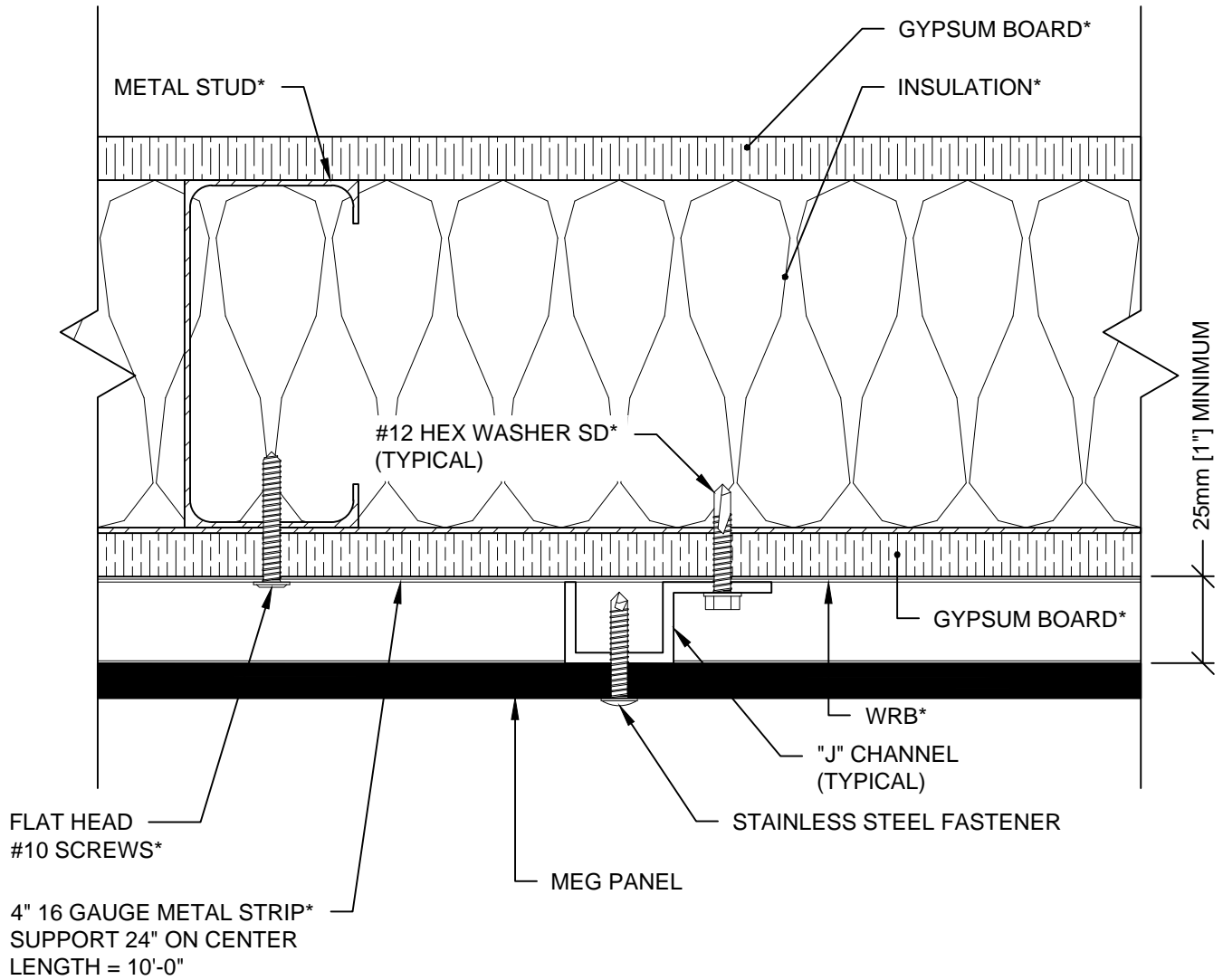
PANEL THICKNESS	A	B	C	D
8mm (5/16")	700mm (27 9/16")	500mm (19 1/16")	40mm (1 9/16")	40mm (1 9/16")
10mm (3/8")	800mm (31 1/2")	600mm (23 5/8")	60mm (2 3/8")	60mm (2 3/8")

PANEL HOLE LAYOUT BASED ON WIND LOAD REQUIREMENTS
 (MAXIMUM LENGTH)

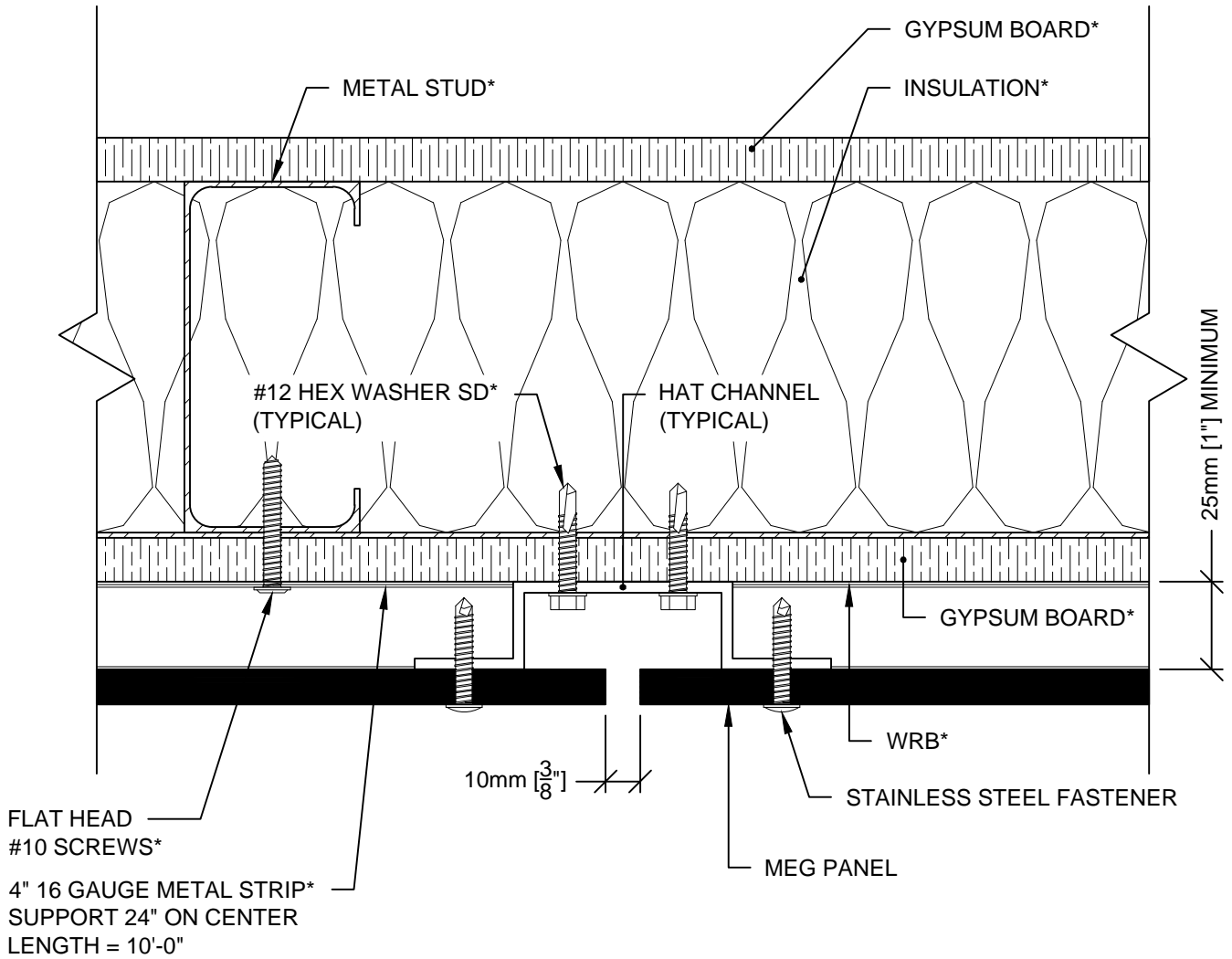


NOTES FOLLOWED BY AN ASTERISK (*) REFER TO ITEMS THAT ARE BY OTHERS.

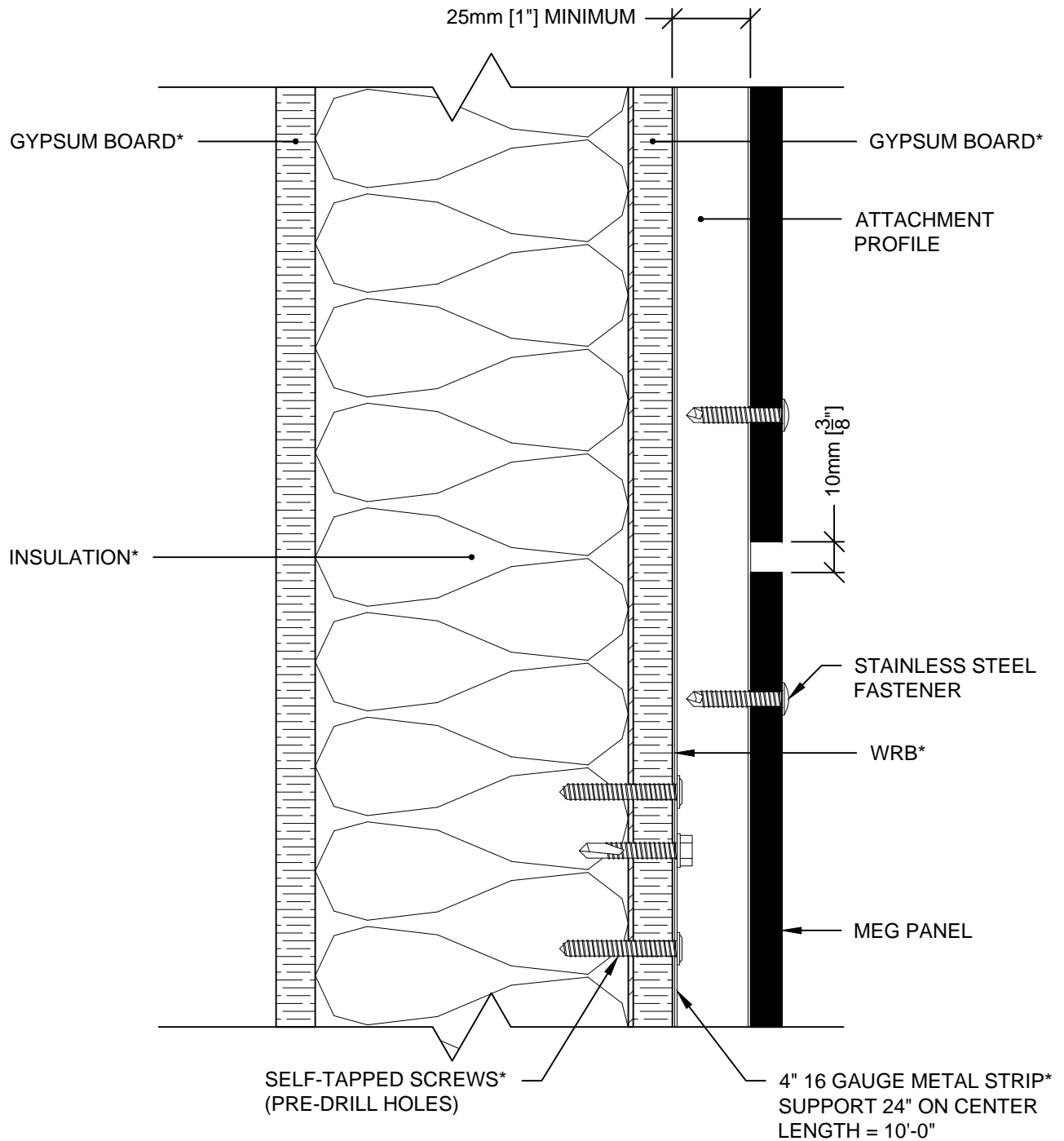
THE INFORMATION SHOWN HERE IS TO BE USED FOR PROMOTIONAL PURPOSES ONLY. IT IS THE USER'S RESPONSIBILITY TO CONFIRM THE APPROPRIATENESS AND COMPLETENESS OF THE INFORMATION FOR THEIR OWN PRACTICAL USE. MEG INC. OR ANY AFFILIATE SHALL NOT BE LIABLE IN THE EVENT OF INCIDENTAL OR CONSEQUENTIAL DAMAGES IN CONNECTION WITH, OR ARISING FROM, THE USE OF THE INFORMATION IN THIS DOCUMENT.



NOTES FOLLOWED BY AN ASTERISK (*) REFER TO ITEMS THAT ARE BY OTHERS.

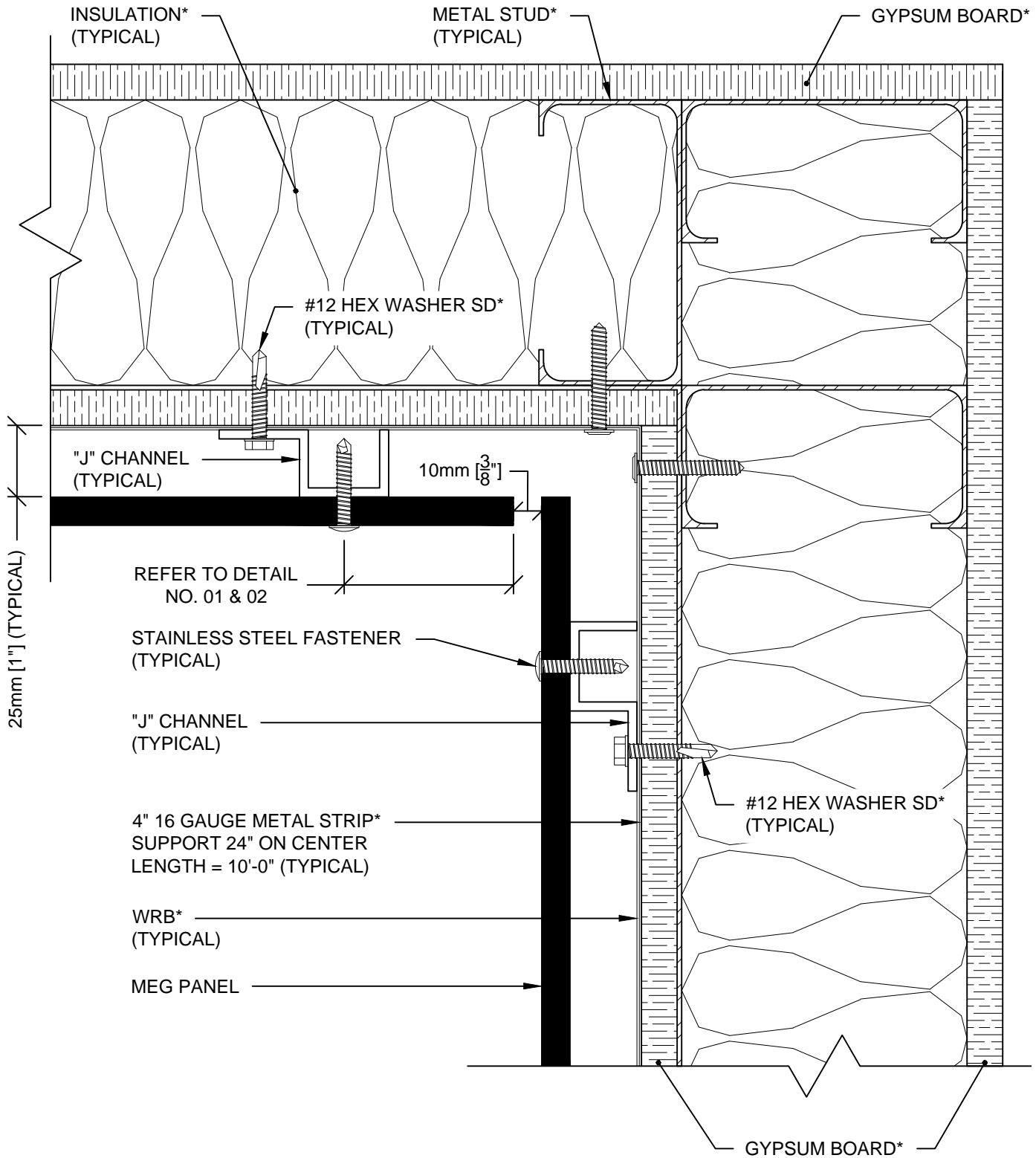


NOTES FOLLOWED BY AN ASTERISK (*) REFER TO ITEMS THAT ARE BY OTHERS.



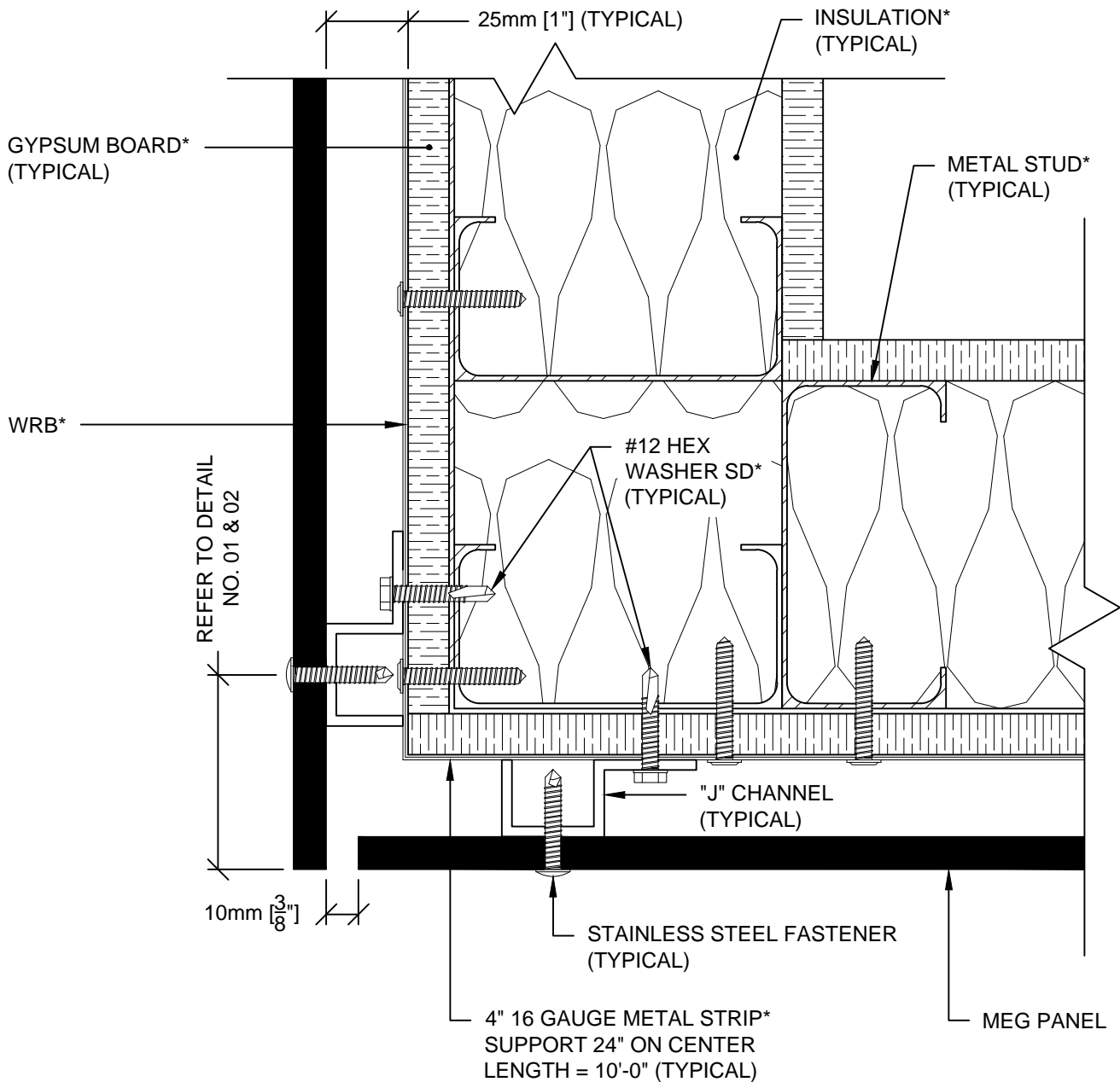
NOTES FOLLOWED BY AN ASTERISK (*) REFER TO ITEMS THAT ARE BY OTHERS.

THE INFORMATION SHOWN HERE IS TO BE USED FOR PROMOTIONAL PURPOSES ONLY. IT IS THE USER'S RESPONSIBILITY TO CONFIRM THE APPROPRIATENESS AND COMPLETENESS OF THE INFORMATION FOR THEIR OWN PRACTICAL USE. MEG INC. OR ANY AFFILIATE SHALL NOT BE LIABLE IN THE EVENT OF INCIDENTAL OR CONSEQUENTIAL DAMAGES IN CONNECTION WITH, OR ARISING FROM, THE USE OF THE INFORMATION IN THIS DOCUMENT.

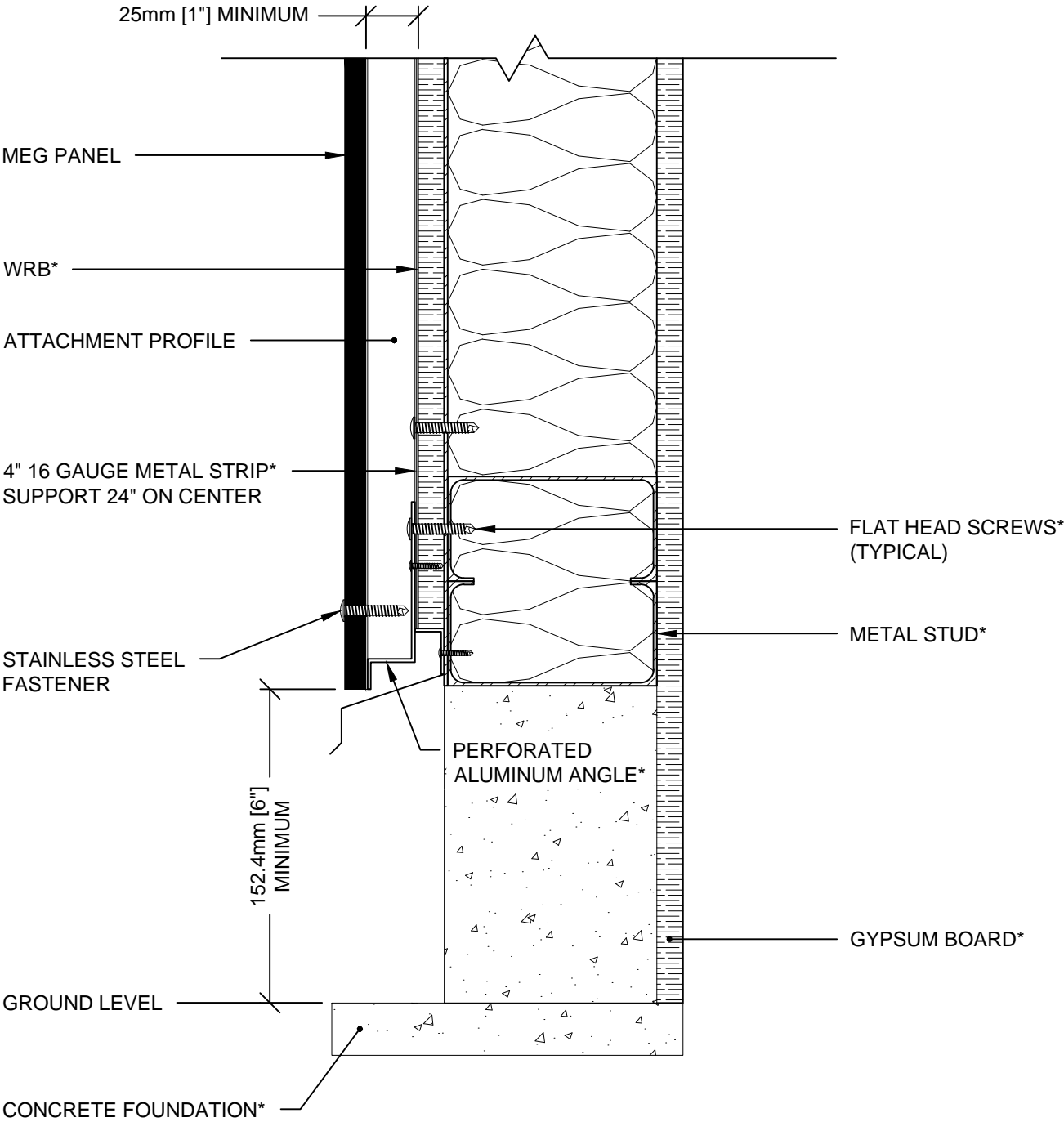


NOTES FOLLOWED BY AN ASTERISK (*) REFER TO ITEMS THAT ARE BY OTHERS.

THE INFORMATION SHOWN HERE IS TO BE USED FOR PROMOTIONAL PURPOSES ONLY. IT IS THE USER'S RESPONSIBILITY TO CONFIRM THE APPROPRIATENESS AND COMPLETENESS OF THE INFORMATION FOR THEIR OWN PRACTICAL USE. MEG INC. OR ANY AFFILIATE SHALL NOT BE LIABLE IN THE EVENT OF INCIDENTAL OR CONSEQUENTIAL DAMAGES IN CONNECTION WITH, OR ARISING FROM, THE USE OF THE INFORMATION IN THIS DOCUMENT.

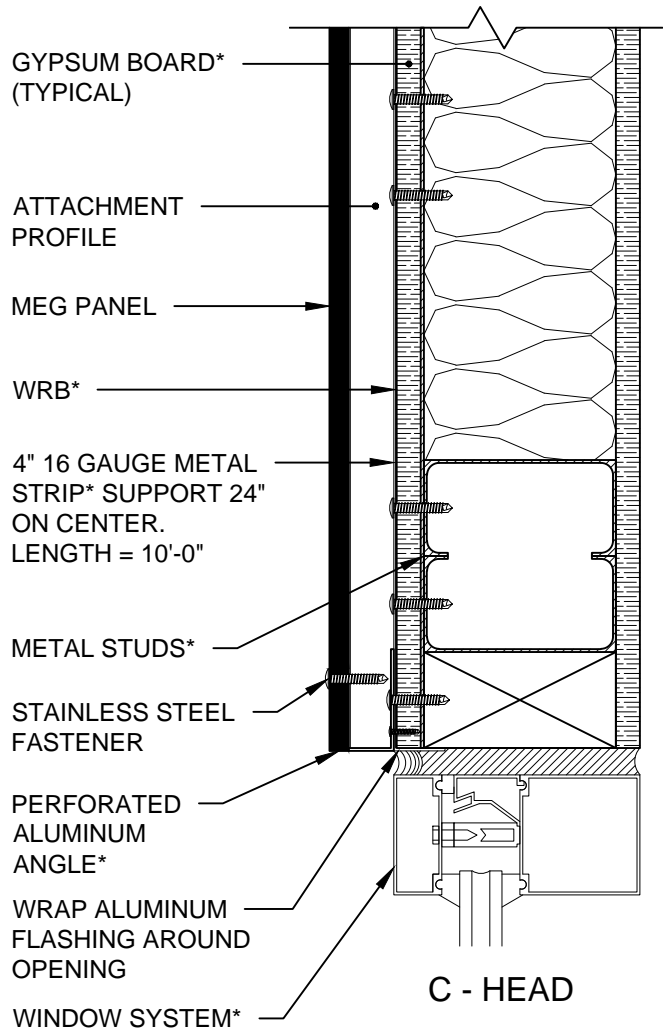
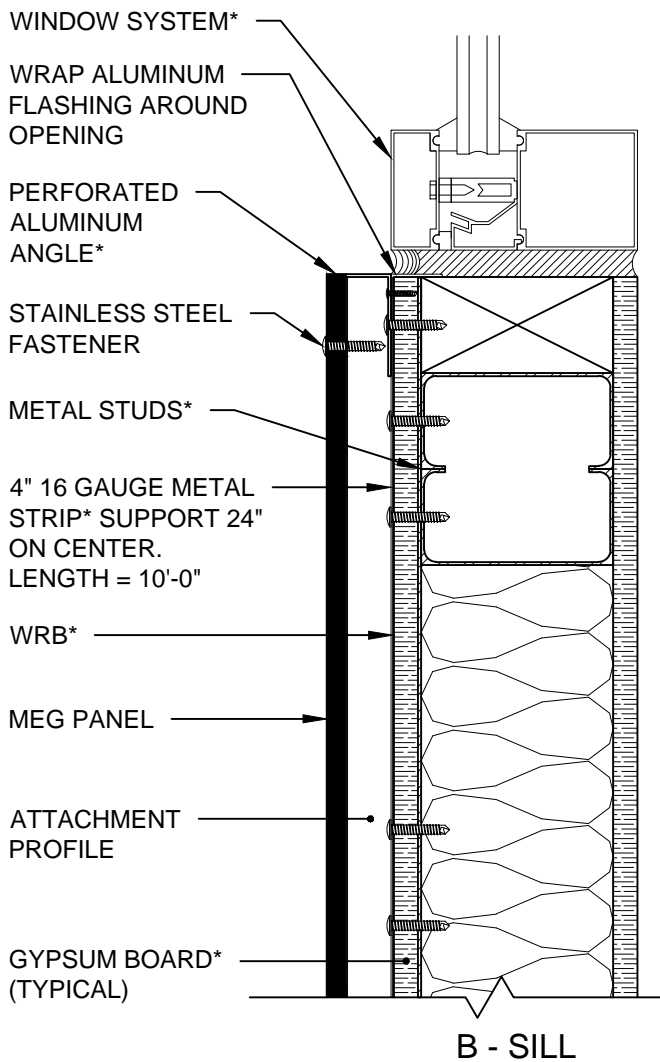
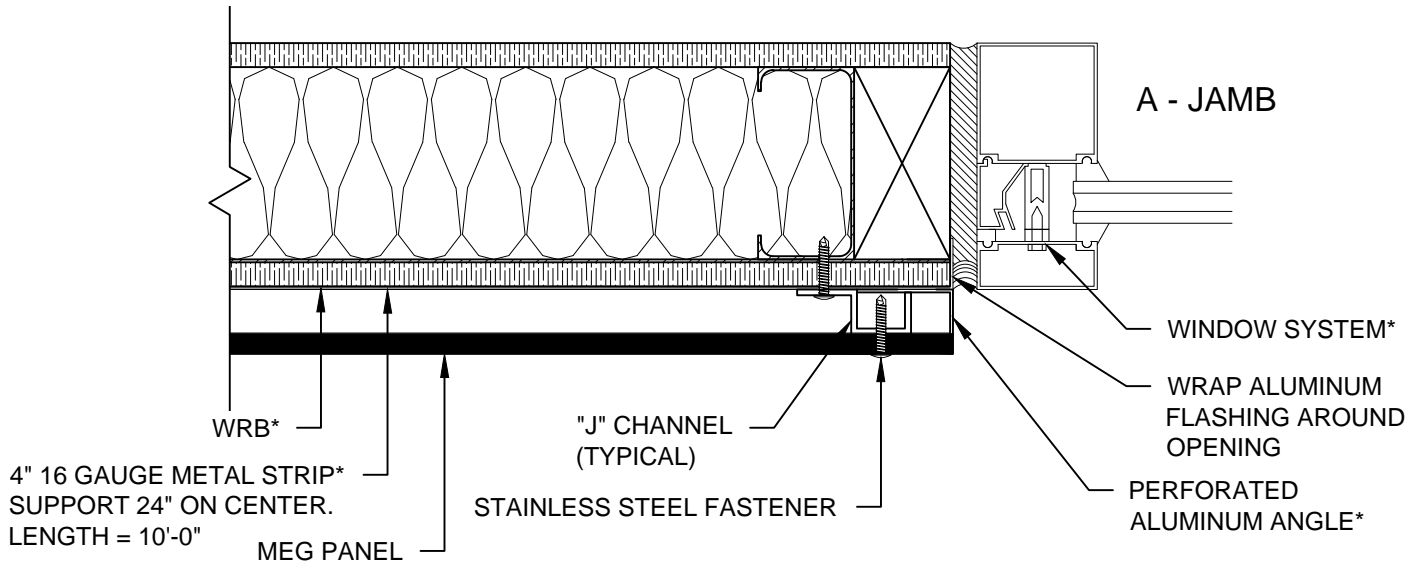


NOTES FOLLOWED BY AN ASTERISK (*) REFER TO ITEMS THAT ARE BY OTHERS.

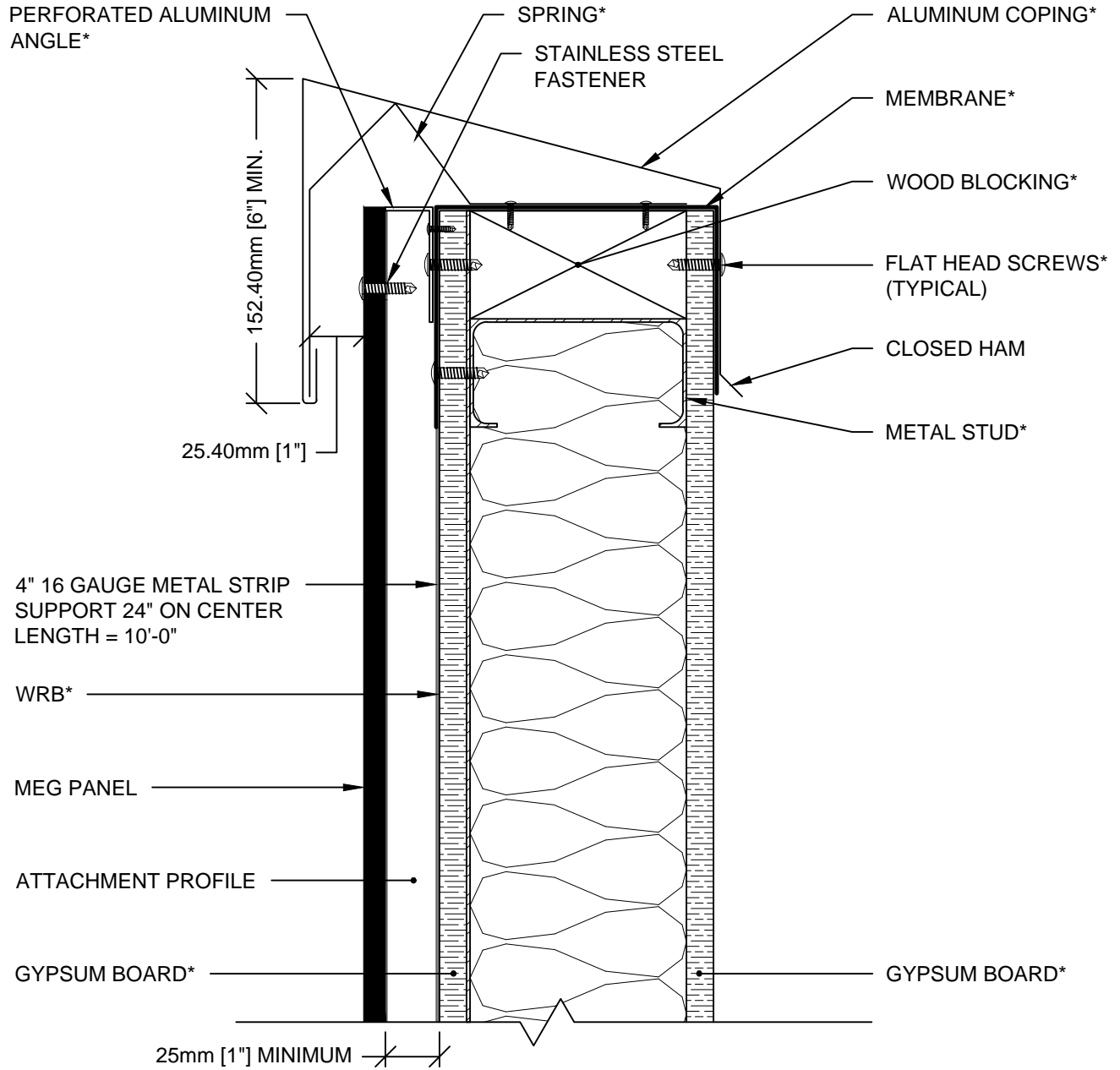


NOTES FOLLOWED BY AN ASTERISK (*) REFER TO ITEMS THAT ARE BY OTHERS.

THE INFORMATION SHOWN HERE IS TO BE USED FOR PROMOTIONAL PURPOSES ONLY. IT IS THE USER'S RESPONSIBILITY TO CONFIRM THE APPROPRIATENESS AND COMPLETENESS OF THE INFORMATION FOR THEIR OWN PRACTICAL USE. MEG INC. OR ANY AFFILIATE SHALL NOT BE LIABLE IN THE EVENT OF INCIDENTAL OR CONSEQUENTIAL DAMAGES IN CONNECTION WITH, OR ARISING FROM, THE USE OF THE INFORMATION IN THIS DOCUMENT.



NOTES FOLLOWED BY AN ASTERISK (*) REFER TO ITEMS THAT ARE BY OTHERS.



NOTES FOLLOWED BY AN ASTERISK (*) REFER TO ITEMS THAT ARE BY OTHERS.